

ITINERARY AND INSTRUCTIONS

Fos sur Mer	Esso
Route from Amsterdam	Utrecht, Breda, Antwerpen, Brussel, Luxemburg (refuel), Metz, Dyon, Lyon, Salons Miramas take A 56 (= through westside lake), Fos sur Mer
Km/required time	1250 km 18 hrs
Spent from Fos to Duisburg/Lagerdorf:	Lyon, Dyon, Luxemburg (refuel), Trier, Koln or Duisburg, or Dortmund, Ibbenburen, Wildeshausen, Hamburg
Km/required time	1100 km 16 hrs
Particularities:	<ol style="list-style-type: none"> 1. Verify, before departure, the presence of Personal Safety Means. A Corbo pass may be requested. 2. Weigh car, then report at gatekeeper, the latter will call FCC cat cracker and will communicate whether you can drive in, then report at the control room with the analysis certificate and CMR. Back to the car, Esso employees will pick you up and will further assist you. Always follow their directions! Unloading by means of 3" storz coupling. After unloading, weigh the empty car and report off at the building of the weighing bridge. 3. Loading of spent, a rope or band to avoid hitting of the hose during loading will be compulsory, the car will need to be earthed. Noise protection will be compulsory, will be available at planning. 4. After loading, bring the completely filled in Dechets de Suive form to the customer and back to Getron.

Frankfurt am Main (Not Breuberg/ Hochst im Odenwald)	Hochst
Route from Spijkenisse	Rotterdam, Breda, Eindhoven, Venlo, Koln, A3, exit 47 Frankfurt, A66, exit 16 Frankfurt Hochst
Km/required time	480 km 7 hrs

Fulda	Fulda
Route from Spijkenisse	Rotterdam, Breda, Eindhoven, Venlo, Koln, Olpe, Siegen, Giessen, Alsfeld, B254, Fulda
Km/required time	550 km 9 hrs
Route from Lillebonne	Yvetot, Amiens, Valenciennes, Namen, Luik, Aachen, Koln and then as mentioned above
Km/required time	908 km 13 hrs
Route from Ambes	Ambes – Angouleme – Poitiers – Orleans – Parijs – Reims – Metz – Kaiserslauteren – Mainz – Offenbach – Hanan - Fulda
Km/ required time	1290 km 18 hrs
Particularities:	<ol style="list-style-type: none"> 1. Getron hose is available at customer. 2. Use goggles, helmet, safety shoes and overall. 3. Maximum speed at the terrain is 10 km/h. 4. Alcohol and smoking are prohibited. 5. Keep exist of emergency services free of obstacles. 6. First-aid post next to gatekeeper, extension 2262
Unloading	Unloading time: 06.00 - 08.00 hrs

ITINERARY AND INSTRUCTIONS

Fürsterwalde	Goodyear Dunlop
Route from Botlek	Rotterdam, Utrecht, Apeldoorn, Osnabrück, Bad Oeyrhhausen, Hannover, Berlin, Potsdam, Frankfurt am Oder, exit 4, to the righth at the bottom, straight ahead along Aral pomp, traffic light, turn to the right after the 2nd street, drive through industrial zone Trenkeweg up to the end, straight ahead crossing, turn to the right at the end of the street, Rohstoffannahme Goodyear/Anlop
Km/required time	750 km 11 hrs
Route from Lillebonne	Yvetot, Neufchateau, Amiens, Gent, Antwerpen, Eindhoven, Venlo, Dortmund, Hannover, then as mentioned above
Km/required time	1156 km 17 hrs

Gelnhausen	Veritas
Route from Botlek	Rotterdam, Breda, Eindhoven, Venlo, Koln, Koblenz, Frankfurt, Hanau, Gelnhausen
Km/required time	525 km 7 ½ hrs
Route from Lillebonne	Yvetot, Amiens, Valenciennes, Namen, Luik, Koln, then as mentioned above
Km/required time	850 km 12 hrs
Unloading:	Deliver before 8.30 hrs.

Gelsenkirchen	Sabic
Route from Botlek	Rotterdam, Utrecht, Arnhem, Emmerich, exit Wesel/Schermbeck. follow B58 through Dorsten, then direction Gladbeck, B 52 direction Gelsenkirchen, at the B224 exit Gelsenkirchen Scholven, turn right at the top, straight ahead at the traffic lights, next road turn to the right. (follow signs "LKW Verladung") Weigh at the right before gatekeeper.
Km/required time	220 km 3 hrs
Route from Hannover Please contact Planning for translation	Hannover, Dortmund, Oberhausen A2, Afrit 5 Essen, Gladbeck 224. Onderaan de afrit links richting Marl. Paar Stoplichten door, wordt 4 baans, afrit Scholven. Bovenaan kan je links en rechts richting Sabic-Ruhr, Oel, Je gaat rechtsaf. Stoplicht rechts over de Autobahn, Stoplicht rechtdoor, 1 ^e straat rechts Tor Sud, staat aangegeven Ruhr –Oel – Sabic. Na 150 meter rechts 2 weegbruggen, daar naast een parkeerterrein voor overnachten.
Particularities:	Wegen + kopie maken van de CMR of bij uitwegen een kopie maken. Je krijgt een pas bij de portier 100 meter verder. Bij Portier naar binnen rijden richter Tor Oost, bij kantine rechts langs Tor Oost, 2 ^e straat rechts, links voor de slagboom laten staan, melden gebouwen 621, PD Loket, Dagarbeiderspapieren invullen. Mensen gaan mee om de slagboom open te doen. Op de put rijden, Pas op de weg rechts en links is small! Stempelplaten gebruiken, zoveel mogelijk naar voren i.v.m. kiepen. Geen bovenklep open i.v.m. vochtigheid, loskoppeling, ligt in silo, klem goed vastzetten met extra touw, om de slang aan de loskraan te zetten i.v.m. trillen van de slang. Als hij leeg is eerst afmelden bij gebouw 621, dan gaat er iemand met je mee. Koppeling terugleggen. Retour weegbrug Tor Sud, uitwegen, je krijgt een weegbriefje mee, toegangspas afgeven. Je krijgt de heer Wolfgang Halembra op nr 0151- 12050605 Kantoor 0151 – 12050606, kan je bellen bij vertraging.
Km/ required time	237 km 3 hrs

ROUTEBESCHRIJVINGEN EN INSTRUCTIES**ITINERARY AND INSTRUCTIONS**

Geretsberg	Gummiwerke Kraiburg
Route from Spijkenisse	Rotterdam, Breda, Eindhoven, Venlo, Koblenz, Frankfurt, Nurnberg, Regensburg, Exit 106 Landau, Essenfelde, Burghausen. Past the bridge (border) to the right at the first roundabout. After 2,5 km in forest to the left (= u-turn) keep following this road, at the end turn right at the fork. Keep following the mainroad, true "Hochberg" than after 3,5 km factory on the right side.
Km/required time	979 km 14 hrs
Route from Lillebonne	Yvetot, Beauvais, Compiègne, Reims, Saarbrücken, Mannheim, Heilbronn, Stuttgart, München, B12, Allotting, Further description as mentioned above.
Km/required time	1140 km 18 hrs
Particularities	From Mo up to and including Fri. Between 6.00 en 12.00 hrs. unloading
Route from Ambes	Ambes, Angoulême, Limoges, Mont Luçon, Moulin, Blanzay, Chalon, Beaune, Besançon, Mulhouse, Freiburg, Tuttlingen, Mengen, Memmingen, München, Wald Kraiburg, Burghausen, Geretsberg
Km/required time	1460 km 20 hrs

ITINERARY AND INSTRUCTIONS

Germersheim	Gumasol
Route from Botlek	Rotterdam, Breda, Eindhoven, Venlo, Koblenz, Bingen, Speyer, via B9 exit Germersheim Sud, go left at the bottom, through L539 to Germersheim. 1 ^{we} big crossing right, on your leftt is the intrance of the factory
Km/required time	500 km 7 ¼ hrs
Route from Ambes	Ambes – Brive A 71 – Riom – exit 13 Montmarault – N79 Paray – N70 – Montecau-Les-Mines – Chalons sur Saone – Beaume – Besancon – Mulhouse – Strasbourg – Lauterburg – Germersheim
Km/required time	1080 km 16 hrs
Particularities:	A fixed unloading procedure is in place: 1. report at the gatekeeper. 2. take a sample. 3. drive to the unloading location. 4. report at unloading location. Gumasol personnel will indicate when and where unloading will take place. 5. make use of unloading hose at customer, this hose will also need to be fixed on the bottom side. 6. Dust-free unloading will be compulsory in connection with the neighbours.
tomtom coordinates	N49 12.685 E8 91.885

Ghlin : see Baudour	
----------------------------	--

Hamburg	
Route fromHannover/ Misburg	Phoenix Noeldekestrasse 4, Tor 10 Hannover A7 direction Hamburg, A7 afslag 35 Fleestedt, turn right approximately 5km gone follow, firstly Shell at the right-hand side, after that Aral at the left-hand side firstly Shell at the right-hand side afterwards Aral to the left-hand side beyond, at red lights rechtsaf, gone follow at gatekeeper Contitech/Phoenix at gatekeeper bug 10 communicate. Tel nr. Phoenix Hamburg 0049-1755759546
Km/required time	145 km - 2,5 hrs
Unloading time	The unloading time passed, if the agreed time can not be met then immediately get in touch with Phoenix Hamburg Tel 00491755759546
tomtom coordinates	N53 27.166 E9 59.458

Hamm	
Route from Loncin/Pepinster	Aachen, Neuss, Wuppertal, Unna, Bergkamen, Hamm
Km/required time	230 km, 3 hrs
Particularities:	If required in order to clean then at Ecla in Grace-Hollonge

ITINERARY AND INSTRUCTIONS

Hanau	Goodyear/Dunlop
Route from Botlek	Breda, Eindhoven, Venlo, Koblenz A 48, Frankfurt A3, direction Wurzburg, exit Hanau, direction Fulda, Steinheim, exit Hanau Bahnhof, industrial zone, Birkenhainerstrasse, Dunlopstrasse
Km/required time	511 km 8 hrs
Route from Lillebonne	Yvetot, Amiens, Valenciennes, Namen, Luik, Aachen, Koblenz, then as mentioned above.
Km/required time	793 km 12 hrs
<p>Instructions unloading bulk wagons soot:</p> <ol style="list-style-type: none"> 1. The bulk will be weighed before you go to the unloading location. 2. The driver will provide the documents at the office of the warehouse. 3. If the soot is approved by the lab the driver will take the bulk, under supervision of an employee of the factory, to the unloading location. 4. Connection of the bulk wagon will need to take place on the basis of the indications of the employee of the factory. 5. In the event irregularities occur during the unloading the unloading will immediately need to be interrupted and the employee of the factory will need to be informed (do not personally undertake any actions!) 6. When the unloading is finished, the vehicle will need to remain at its location until the employee of the factory grants authorisation to drive back to the warehouse. 7. At the office of the warehouse the driver will first be provided with the weighing card for the second weighing. 8. When the net weight corresponds with the delivery documentation the driver will receive the signed documents back and can leave. 	

ITINERARY AND INSTRUCTIONS

Hannover	Continental
Route from Botlek	see Celle
Km/required time	450 km 7 hrs
Route from Lillebonne	Yvetot, Valenciennes, Namen, Luik, Maastricht, Venlo, Duisburg, Dortmund, Hannover
Km/required time	830 km 13 hrs
Route from Tiszaujvaros	Budapest, Gyor, Bratislava, Praha, Dresden, Magdeburg, Hannover (afrit Herrenhausen) Communicate at gateway 10
Km/required time	1250 km - 20 hrs
Route from Hannover	A37 – A2 – exit Stocken
Km / required time	15 km – ½ hrs
Unloading time	From 07:00 hrs (coordinate)
tomtom coordinates	N52 25.053 E9 38.280

Hannover / Misburg	Columbian Carbon
Route from A2	Motorway A2 Hannover Kassel, exit follow Buchholz/Misburg
Route from A7	A7 direction Hannover, exit 58, B 65 direction Hannover, direct the first right follow Misburg, traffic lights right, you are now at the Höversche strasse, Höversche strasse turns into Anderter strasse, straight a head up to and including crossing Mc Donalds, Lidl, turn left at the petrol station , Kreisstrasse after ca. 200 m at the right side.
Particularities:	With respect to loading: <ul style="list-style-type: none"> • Move onto the weighing bridge. • Report at Versand, provide loading assignment. • To the lab, on the table a folder will be available, write down your data (car no., name, destination, type, time of arrival and time of departure). • Back to Versand and learn where you can load. Personnel will join you.
tomtom coordinates	N52 22.821 E9 51.487

Hannoversch Munden	Continental A9
Route from Lillebonne	Yvetot, Valenciennes, Namen, Luik, Maastricht, Venlo, Duisburg, Dortmund, Kassel, Hannoversch Munden
Km/required time	790 km 11 ½ hrs
Route from Hannover/Misburg	Misburg – A7 – Hannover Münden
Km/required time	150 km – 2 ½ hrs

ITINERARY AND INSTRUCTIONS

Hemsbach	
Route from Hannover	Exit Misburg BA7, direction Kassel, Bad Hersfeld, BA5 Frankfurt, direction Basel, Exit 32 Hemsbach, Up left till until the roundabout, straight 2nd roundabout right. Ind. South, 3rd street left after 50 meters Left entrance
Km/required time	410 km 6 ½ hrs
Particularities:	

Henstedt-Ulzburg	Panasystem
Route from Spijkenisse	Spijkenisse, Utrecht, Amersfoort, Meppel, Emmen, Zwartemeer (border crossing) Bundesstrasse 213, Halter A1, Bremen, Ulzburg (so don't go : Enschede/Bad Bentheim)
Km/required time	524 km 8 hrs
Particularities:	

Heuchelheim	
Route from Kalscheuren	Koln, Olpe, Siegen, via B49 direction Giessen, exit Heuchelheim industrial zone West.
Km/required time	150 km 2 ½ hrs
Particularities:	Leave the car outside, first report. Then continue to Gate 2.

Hoechst im Odenwald This is Breuberg	
---	--

Homburg	Michelin
Route from Botlek	Rotterdam, Breda, Antwerpen, Brussel, Arlon, Luxemburg (refuel), A3/A13/A8/A6 exit 9, to the right on the bottom, first to the left, after ca. 5 km trading estate. Factory on the left.
Km/required time	495 km 6,5 hrs
Route from Lillebonne	Yvetot, Beauvais, Reims, Saarbrücken, Homburg
Km/required time	582 km 9 hrs
Particularities:	1. Entry at the latest at 11.30. 2. For delivery, write the license plate number on the freight documentation.

Hoogezand	Trelleborg
Route from Botlek	Botlek, Utrecht, Zwolle, Assen, Zuidlaren, Hoogezand,
Km/required time	270 km 4 hrs
Route from Lillebonne	Yvetot, Neufchâteau, Amiens, Lille, Gent, Antwerpen, Breda, Utrecht, then as mentioned above.
Km/required time	739 km 11,5 hrs
tomtom coordinates	N 53 09.993 E6 44.350

ITINERARY AND INSTRUCTIONS

Höxter	
Route from Hannover/Misburg	A7 – Exit 59 – B443 – B3 – Thiedenwiese – B240 Eschershausen – B64 Höxter
Km/required time	95 km 2 hrs

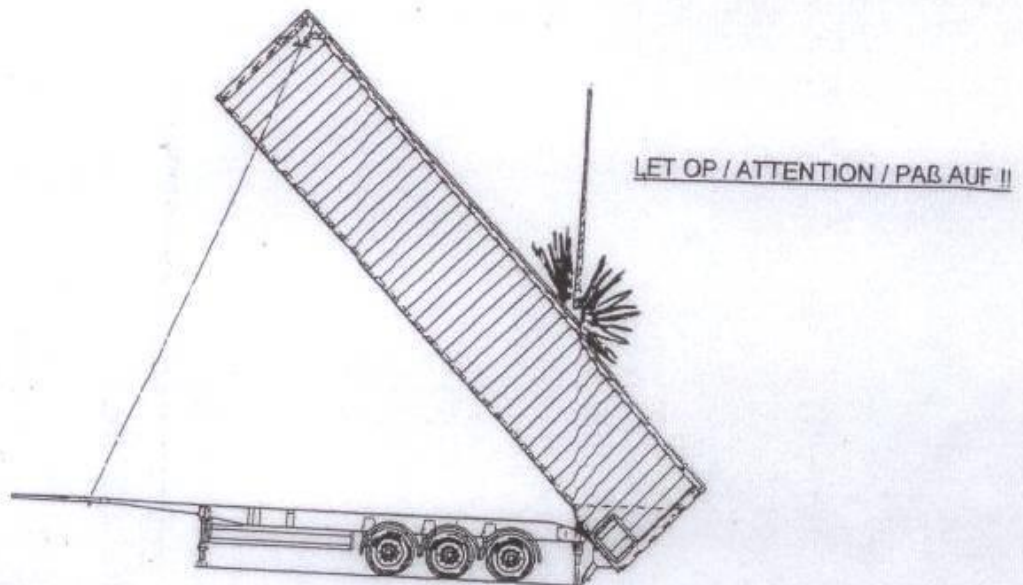
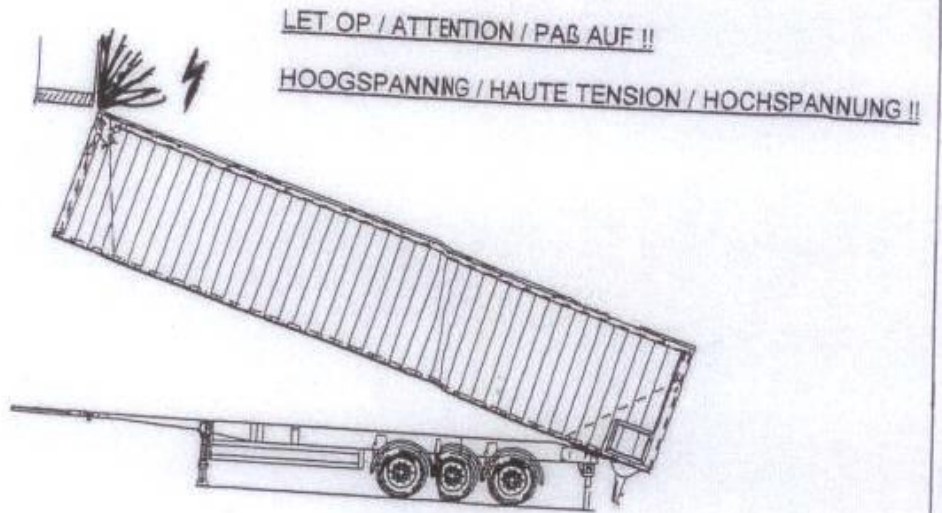
Huckelhoven	Rado
Route from Lillebonne	Yvetot, Amiens, Valenciennes, Namen, Luik, Aachen, Huckelhoven-Baal
Km/required time	560 km 8 hrs

Immingham	Conoco
Route from Felixtowe	Bury st. Edmunds, Kings Lynn, Boston, Grimsby
Km/required time	220 km 4 hrs
Particularities:	
<ol style="list-style-type: none"> 1. Always use your personal safety equipment. 2. Unloading by means of 3" storz couplings. 3. Follow the rules at the refinery. 4. Couple the unloading hoses at the cracker thereafter, under supervision of authorised personnel, again tighten the couplings and place the safe tyings (also the two clamps hanging on the silo). 5. To access the upper side of the bulk wagon first pull up the railing. 	

Jarrie	Cezus Framatome ANP 291 route de l'Electro Chimie
Route from Botlek	Rotterdam, Dordrecht, Breda, Antwerpen, Brussel, Luxembourg (refuel), Metz, Dijon, Macon, Bourg-en Bresse, Grenoble, Grenoble A51 exit 8, follow N85, after ± 8 km stay right next to the fly-over, at the roundabout turn left under the fly-over, passed Atochem, gate at the left side. (291 route de l'Electro Chimie 38560 Jarrie (contact Mmes Pardo and Moinel).
Km/required time	1100 km 16 hrs + 11 hrs rust
Route from Kalscheuren	Koln, Blankenheim, Bitburg, Trier, Luxemburg. (Further as mentioned above.)
Km/required time	850 km ca 12 hrs + 1 x 11 hrs rest
Particularities:	Report as from 7.30 up to at the latest 9.00
Instructions:	
<ol style="list-style-type: none"> 1. The driver will report at the gatekeeper, he will be provided with the safety instructions and an escape mask. Moreover the car will be weighed. 2. Freight documentation will be provided at the office window "receipt of goods" (office has an exit to the outside). 3. Position the truck at the unloading location, do not drive in yet. Report at the control room (Salle supervision). Here you will receive authorisation to drive in. 4. From gatekeeper inquire where bulk can be parked in area (for or after half lossing) 5. In the area of Cezus cannot be climbed there on the roof of the semi-trailer 6. When you have authorisation you can, in reverse, drive the car in. 7. Connect the unloading nozzle. 8. Start unloading under the supervision of the Cezus personnel. Pay attention that the front side of the container will move freely past the side platforms when discharging and that the top of the trailer will not hit the partition wall (reference is made to the drawing). 9. During the first phase you will be able to unload approximately 12 tons, when the silo is full, you will need to return to the supervisor to report your departure. 10. Ask whether the trailer may be decoupled at the terrain. Then leave the terrain. Report to planning before you leave. 11. Normally skip 1 day and then unload the remainder in the same manner. Again, pay attention to the front side of the trailer when discharging and the last metre above the top (reference is made to the drawing). 12. Weigh the empty vehicle, then pick up the weighing tickets. 13. Deliver the weighing ticket at the office window "receipt of goods" (guichet réceptions). You will receive the signed CMR. 14. Departure from the factory. 	

ROUTEBSCHRIJVINGEN EN INSTRUCTIES

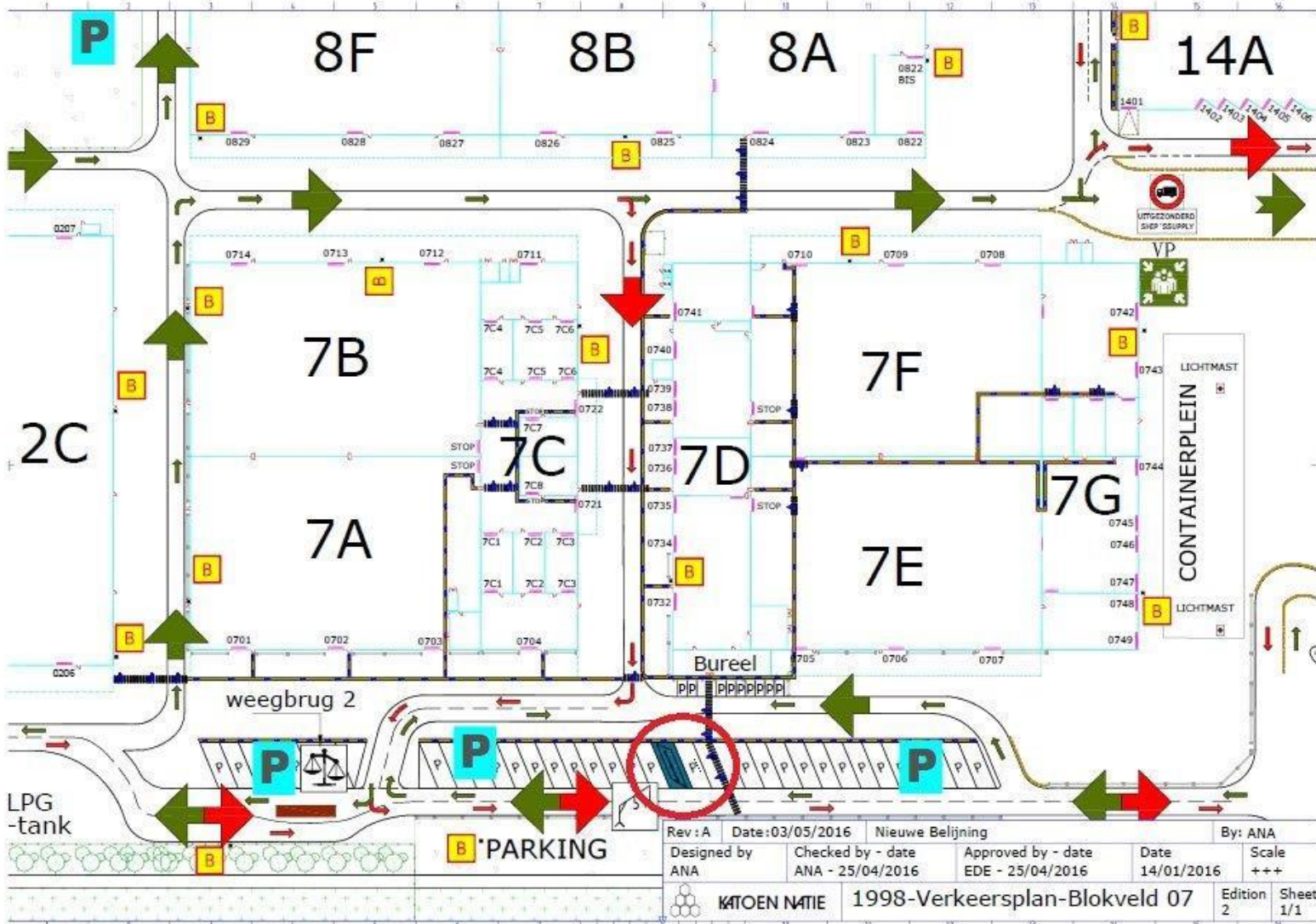
JARRIE



ITINERARY AND INSTRUCTIONS

Kallo	Evonik (biolys)
Route from Botlek	A29 Bergen op Zoom, A4-A29, A58/A4/E312 exit 10
Particularities:	Plan Portiek and Safety Silo-truck-drivers

Plan Portiek:



ITINERARY AND INSTRUCTIONS

Kallo	Evonik (biolys)
Route from Botlek	A29 Bergen op Zoom, A4-A29, A58/A4/E312 exit10
Particularities:	Plan Portiek and Safety Silo-truck-drivers

Safety Silo-truck-Drivers: Use of Safety-platform

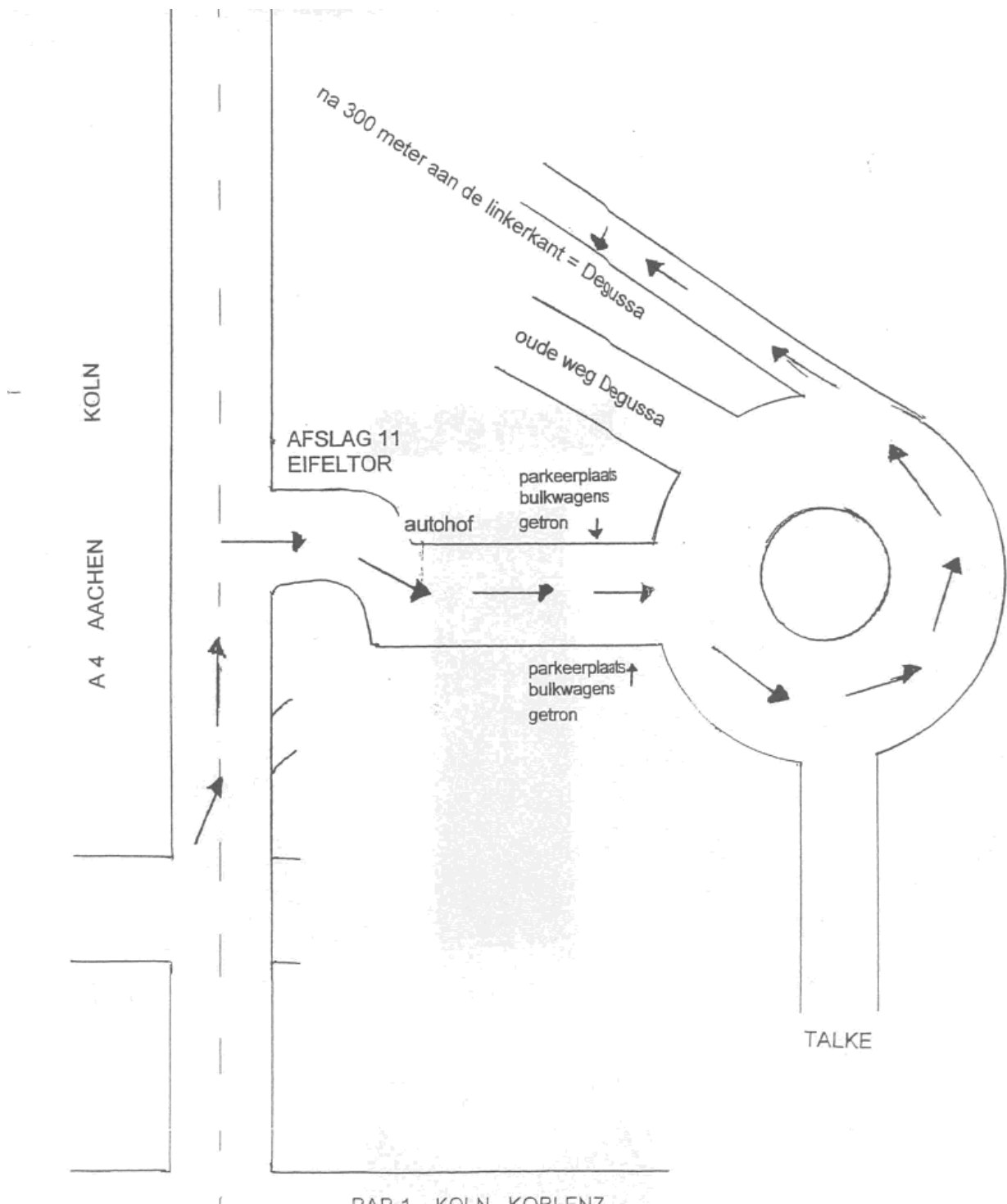
In order to increase the safety of your drivers, we would like you to make sure that your drivers always use the safety-platform and follow the applicable guidelines. In order to make sure that your drivers are able to follow these guidelines: please make sure your drivers bring along a safety-harness. Following plate is displayed at the platform, visualising the guidelines:



- Safety-spot is no parking, it can only be used for drivers of silo-trucks who need to ascend their silo-truck
- Safety-spot is for silo-trucks only
- Park correctly in the blue square
- Gear up before you go up: always use your safety-harness!
- Evacuate blue square after you have descended
- Put your truck on a parking spot
- Go to the office

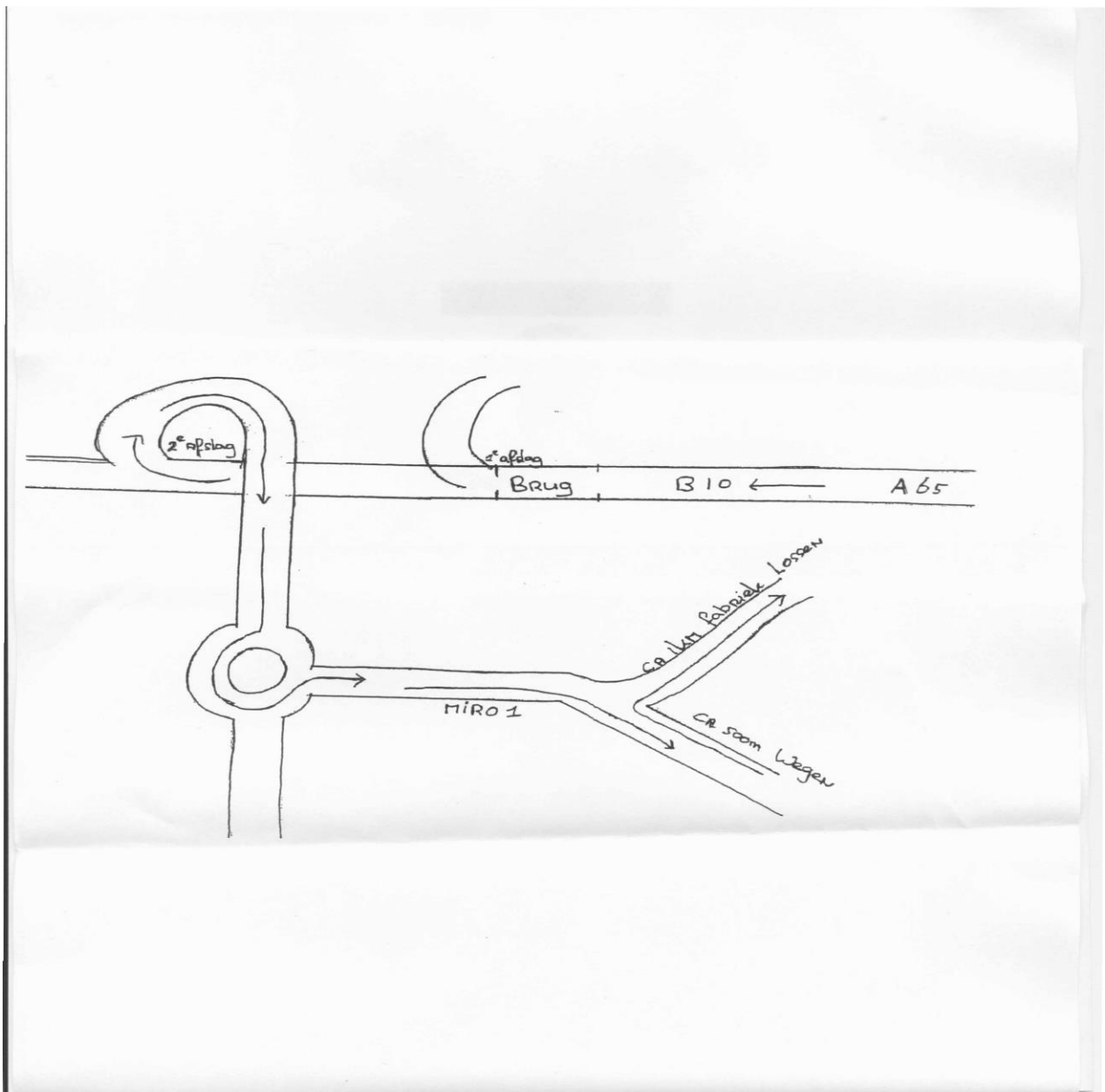
Many thanks in advance to cooperate with us in order to increase the safety of your drivers.

Kalscheuren	Degussa
Route from Botlek	Rotterdam, Breda, Eindhoven, Venlo, Munchengladbach, autobahn Kreuz, Kerpen, A 4 direction Koln, exit Eifeltor, pass parking space, to factory
Tomtom coordinates	N50 52.387 E6 55.107



ITINERARY AND INSTRUCTIONS

Karlsruhe	Miro
Route from Amsterdam	A1 Barneveld, A 30 Veenendaal, A12 Grijsoord, A50 Nijmegen, A73 Venlo, A61 Koblenz-Ludwigshaven, A65 landau- Karlsruhe, B10 below the bridge 2e exit to factory Miro 1. Take the Roundabout three-quarter. ca 500 meters on the right is the weighbridge.
Km/required time	570 km 8 hrs.
Particularities:	After roundabout turn right to weigh first, then a few meters back and turn right to go to the gatekeeper.



ITINERARY AND INSTRUCTIONS

Karlsruhe	Michelin
Route from Botlek	Rotterdam, Breda, Eindhoven, Venlo, Koblenz, Mannheim, Karlsruhe
Km/required time	575 km 8,5 hrs
Route from Lillebonne	Yvetot, Beauvais, Reims, Saarbrucken, Pirmasens, Landau, Karlsruhe
Km/required time	700 km 11 hrs

Kirchheim	Huber
Route from Botlek	Rotterdam, Breda, Eindhoven, Venlo, Koblenz, Frankfurt, Wurzburg, Nurnburg, Munchen Ost, Heimstetten, Kirchheim
Km/required time	880 km 13 hrs
Route from Lillebonne	Rouen, Beauvais, Reims, Metz, Saarbrucken, Pirmasens, Landau, Karlsruhe, Stuttgart, Ulm, Munchen Ost, Heimstetten
Km/required time	1040 km 15 hrs
Particularities:	8.00 uur Unloading

Kluisbergen	v.d. Wielen
Route from Botlek	Rotterdam, Breda, Antwerpen, Gent, exit 8 Zevegem, Oudenaarde, Ringweg exit Kluisbergen
Km/required time	200 km 3 hrs

Korinthos	Albemarle
Route from Dortmund	Rotterdam, Breda, Eindhoven, Venlo, Koblenz, Karlsruhe, Munchen, Kufstein, Brennerpas, Bolzano, Verona, Modena, Ancona/Bari/Brindisi (boat) Patra, Korinthos, across the bridge, refinery at the right side.
Km/required time	1630 km 3.75 days through Austria
Particularities:	After loading contact the planning you may have to take the train Freiburg-Novara. Check at the Austria border if the gobox works! Harber money I € 25,-/Gr € 50,- depends on the weight. Autoroute Greece (contact € 12,--)
tomtom coordinates	Train Freiburg : N48 00.853 E7 50.564

Kranj	Sava
Route from Dortmund	Frankfurt, Wurzburg, Nurnberg, Munchen, Salzburg, Villach, Karawankentunnel, Kranj.
Km/required time	1000 km 14 ½ hrs
Route from Valasske	Valasske, Brno, Mikulov, Drasenhoven, Wenen, Spielfeld Maribor, Ljubljana, Kranj.
Km/required time	700 km 12 hrs
Route from Lillebonne	Lillebonne, Yvetot, Rouen, Beauvais, Reims, Metz, Saarbrucken, Pirmasens, Stuttgart, Munchen, Salzburg, Villach, Karawankentunnel, Kranj.
Km/required time	1500 km 28 hrs
*Route from Lillebonne	Lillebonne, Yvetot, Rouen, Beauvais, Reims, Metz, Saarbrucken, Pirmasens, Stuttgart, Munchen, Salzburg, Villach, Karawanken tunnel, Kranj.
Km/required time	1500 km 28 hrs

ITINERARY AND INSTRUCTIONS

La Chapelle	Kleber
Route from Botlek	Rotterdam, Breda, Antwerpen, Brussel, Mons, Maubeuge, Reims, Troyes, exit Troyes centre, dan via N77 direction Troyes, Just before the city direction Paris/La Chapelle st. Luc. On the ringway follow La Chapelle st. Luc, when the road turns into 4 carriageways you can see the signs Kleber. Take exit La Chapelle. (Watch out: sharp turn!!) . Straight on at the roundabout, afther 300 meter intrance factory on the right
Km/required time	525 km 7 ½ hrs
Particularities:	2 km direction Paris, there's a petrol station (Shell)

ITINERARY AND INSTRUCTIONS

Lachen	Stehlin-Hostag
Route from Botlek	Rotterdam, Breda, Antwerp, Brussels, Luxemburg, (refuel) Metz, Strasbourg, Mulhouse, Basel, Zurich, direction Chur. Take exit Pfaffikon, continue under the road, and keep the right. Turn right at the traffic lights, Lachen is indicated. Follow the road. Turn right after hotel with "pizzeria" on the wall. There you will see a sign "Industrie Breiten". Go through the little tunnel and follow the road to the left. Continue the road, cross such straight on, after 300 metres on the right you will find our factory.
Km/required time	835 km 12 hrs
Particularities:	<ol style="list-style-type: none"> 1. When you leave make sure you bring the European export document. 2. At Basel, clear in St. Louis at Haenggi. 3. By means of DKV pass and COP document. Pick up road taxes map at the customs authorities.

La Mede	Total 11
Route from Amsterdam	Utrecht, Breda, Antwerpen, Brussel, Luxemburg (refuel), Metz, Dyon, Lyon, Vitrolles (via Eastside lake)
Km/required time	1250 km 17 hrs

Langelsheim	Koemerling
Route from Botlek	Rotterdam, Utrecht, Amersfoort, Apeldoorn, Oldenzaal, Osnabruck, Melle direction Hannover, exit 35 Hameln, Hildesheim, A7, exit 66 Langelsheim.
Km/required time	556 km 8 hrs
Particularities:	Unloading between 6.00 and 13.00 hrs.

Lelystad	Flevorubber
Route vanaf Botlek	Rotterdam, Utrecht, Almere, A6 Lelystad, exit 10, direction Lelystad, before fillingstation to the right, then to the left: Industrial area Oster. Then straight on, (3 roundabouts), then at the end of the street turn to the right.
Km's / benodigde rijtijden	140 km 2 ½ hrs

Lessines	Trenal
Route from Botlek	Rotterdam, Breda, Antwerpen, Gent, direction Brussel, exit 17, Geraadsbergen, direction Lesse/Lessines, exit industrial zone Nord, go to the left, after 300 meter factory on the right.
Km/required time	235 km 3 ½ hrs
Route from Lillebonne	Yvetot, Amiens, Lille, Tournai, Leuze, Lessines, industrial zone Nord
Km/required time	330 km 4 ¾ hrs
Particularities:	If you arrive a day <u>earlier</u> before 16.00 than the agreed unloading date you will subsequently be unloaded. If you arrive <u>later</u> than the agreed unloading date deliver punctually at 7:00.

ITINERARY AND INSTRUCTIONS

Lillebonne	UCF
Route from Botlek	Rotterdam, Antwerpen, Gent, Kortrijk, (attention! Don't take the exit Paris past Kortrijk), Rekkem, Lille direction Paris, before entering the toll road exit 16 Arras, via Route National, Arras, Doullens. Amiens, on ring Amiens turn clockwise, direction Rouen, A29, direction Le Havre, na Yvetot exit 8 Yvetot Ouest, N15, roundabout Bolleville left direction Zone industrielle de Port Jerome, direction Raffinaderij, UCF is before Esso Refinery at the leftside.
Km/required time	525 km 7 3/4 hrs
Route from Lachen	Lachen, Belfort, Vesoul, Langres, A5 Troyes, ringway Paris, Lillebonne
Km/required time	890 km, 13 hrs

Loading procedure

The loading time indicated on your loading assignment will be the time the loading will actually commence Hence, not the time you will drive onto the terrain.

In the event the time mentioned could not be met, for whatever reason, you will immediately need to contact Getron planning.

There are 3 kinds of procedures:

1. Loading will take more than 4 hours
2. Loading, rejection established, subsequent unloading
3. Unloading of rejected product

In case of the first and second procedure you will, in case the standard 4 loading hours are exceeded, report this to planning on the basis of which planning will report the excess to UCF in Lillebonne.

In case of the last procedure you will need to report this to planning before commencement of the unloading so that planning can report this to Lillebonne.

In the event it is omitted to report the hour excess to planning the hours following the standard 4 hours will be considered at own expense.

The safety regulations with respect to the use of helmet, safety goggles and safety shoes will need to be complied with.

Upon violation of the safety regulations of UCF this will lead to immediate removal from the factory and access interdiction with respect to all other Cabot factories.

After **loading with the terminal truck** you will need to decouple the bulk and put the terminal truck back into position. We kindly request you to keep the truck clean.

In case of complaints with respect to the terminal truck: communicate this to Getron planning.

Particularities:

- In the event the UCF personnel requests whether an additional car could be loaded (for example load extra Cooper) you will first need to **consult Getron planning** in connection therewith.
- **It is prohibited to walk on the top of the trailers.**

ITINERARY AND INSTRUCTIONS

Lillebonne	Cooper
Route de Botlek	see Lillebonne UCF
Route de UCF	Lillebonne, depart fabriek UCF, straight on at the next 5 roundabouts, direction Lillebonne, go right at the 2 ^e traffic lights, Go straight ahead at the stop sign, straight ahead, ignore sign forbidden for 3,5 tons.
<ul style="list-style-type: none"> • Delivery each day as from 7.00 • Carbon black valve and ladder at customer • Spheron SO A will always need to be delivered at 7.00 <p>Unloading procedure Cooper</p> <ol style="list-style-type: none"> 1) The driver has to report himself at the gate (reception, if there 's no one there, call 1616 or 1601 to be taken to the unloading area). 2) When truck has been parked , driver has to pick up a bag from the laboratorium, take a sample out the tanker and bring it back to the lab. 3) The driver waits for approval of the Lab before connecting the unloading hose. When the hose is connected, opening of the unloading valve is strictly forbidden. (driver has to wait for permission given by the shiftleader or the responsible watchman). 4) The Laboratorium gives the shiftleader or the responsible watchman her approval, and gives him the undersigned CMR. 5) The shiftleader or the responsible watchman checks or the right silo is selected, and switches on the installation. 6) The shiftleader or the responsible watchman gives permission to the driver to open the product valve. 7) When vehicle has been unloaded , driver removes unloadinghose and cleans up any spillages.(Shovel, broom and litterbin are available). 8) The driver looks for the shiftleader or the responsible watchman who inspects the unloading hole and mounts the padlock. 9) The shiftleader or the responsible watchman notes the departure time at the CMR, and hands it over to the driver. 10) Driver report himself at the gate and deregister himself. <p>If the laboratory is abandoned, the shiftleader or the responsible watchman leaves the sample at the laboratory and starts the unloading procedure (Material check takes afterwards place).</p>	

Lindau	Metzeler
Route from Botlek	Rotterdam, Breda, Eindhoven, Venlo, Koblenz, Bingen, Speyer, Sinsheim, Heilbron, Ulm, Memmingen.
Km/required time	830 km 12 hrs
Route from Lillebonne	Rouen, Beauvais, Soissons, Reims, Metz, Strassbourg, Kehl, Offenburg, Donausingen, Geisingen, Friedrichshafen